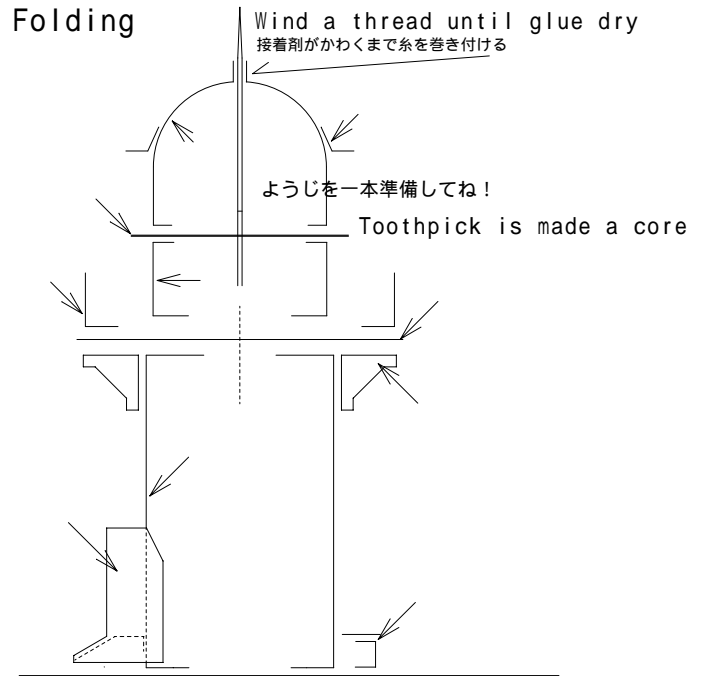


折り曲げ方
Folding



- 山折り線 Turn up line
- 谷折り線 Turn down line
- のりしろ An overlap width



ペーパークラフト NO.88

細島灯台 S,1/100

宮城県日向市(高遠見山)

灯台の大きさ

高さ：建物 11.43m 光り 水面から100.90m
 灯塔の太さ：円筒形 2.9m
 光りのとどく距離：白・緑光25.5海里(約47Km)
 光りかた：白65,000 緑56,000カテラ
 10秒毎に白光・緑光が交互に光る(LB-M30)
 設置年月：明治43年 5月10日

Paper kraft

細島灯台 S,1/100

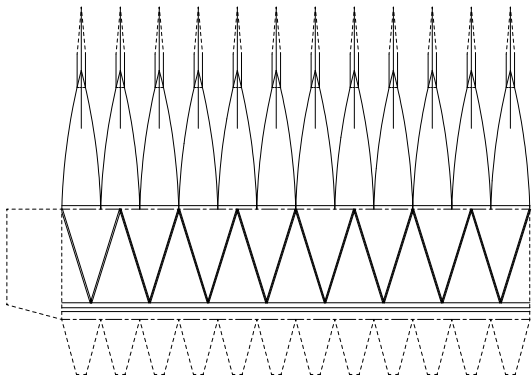
HOSOSIMA LIGHTHOUSE

宮城県日向市(高遠見山) Kyusyu-East Coast

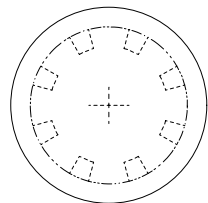
OUTLINE

Elevation : Tower 11.43m Above sea level 100.90m
 Structure : Concrete Cylinder 2.9 m
 Visible Distance :25.5M(47.2Km)
 Light Character : Al Fl W G 20s
 Luminous Intensity : W 65,000cd G 56,000cd
 Establishment : 1910, 5,10

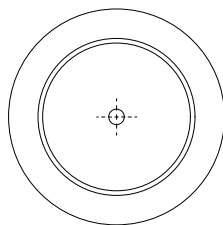
灯ろう Lantern housing



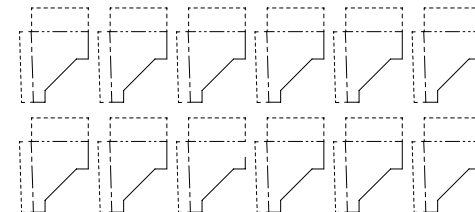
灯ろうひさし Roof



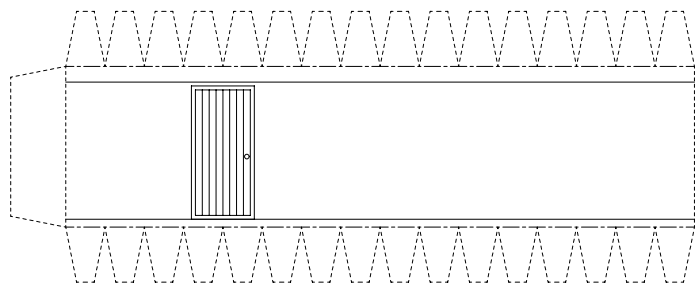
地覆 Wheel guard



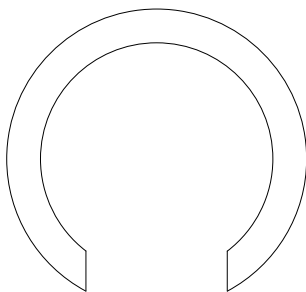
踊り場下部飾り Support rib



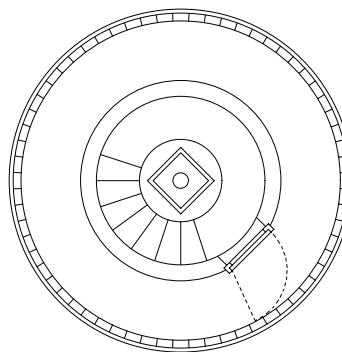
胴壁 Murette



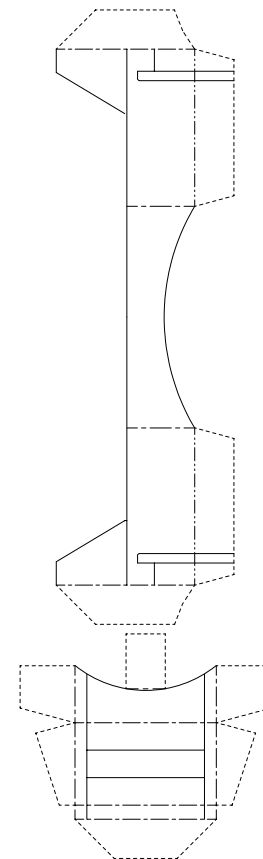
台座-2 Plinth-2



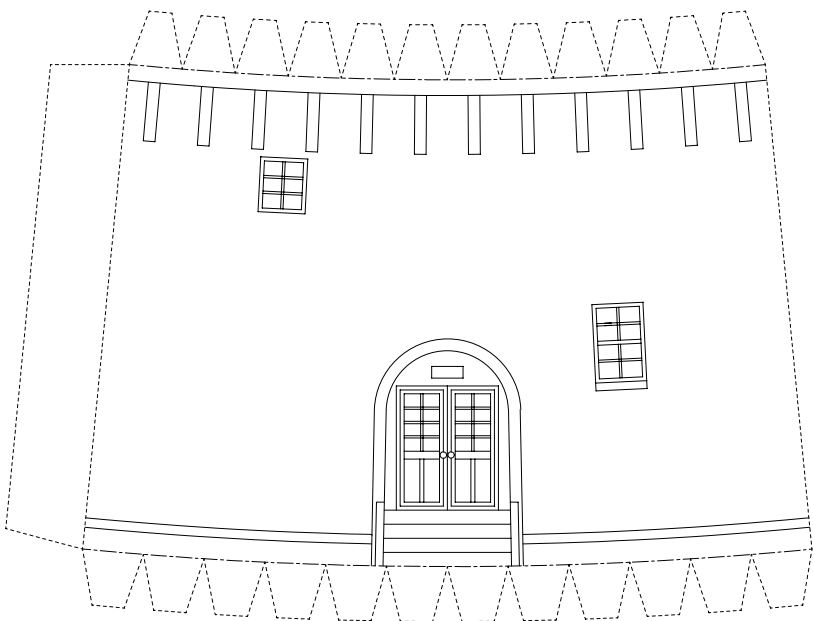
踊り場 Platform



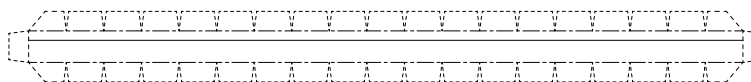
出入口 Entrance



灯塔 Tower



台座-1 Plinth-1



手摺 Hand rail

