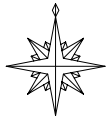


1 / 200

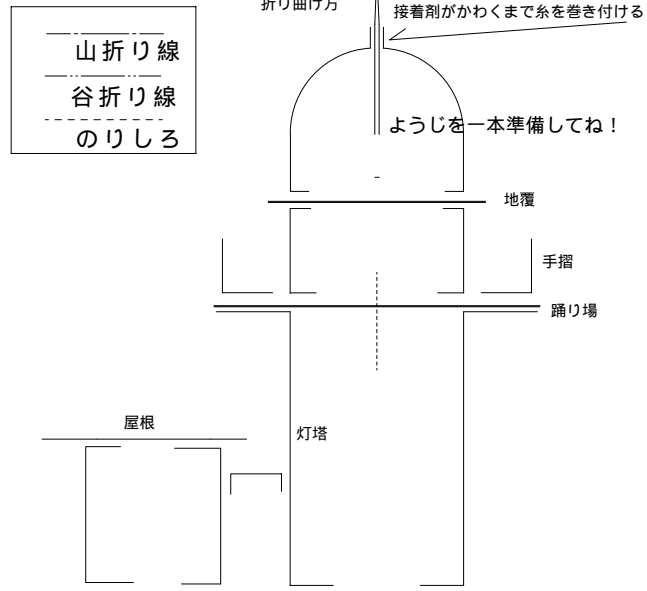


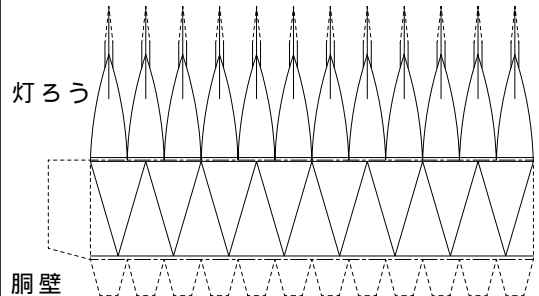
ペーパークラフト NO.85  
**城ヶ島灯台 S,1/100**

神奈川県三浦市(城ヶ島)

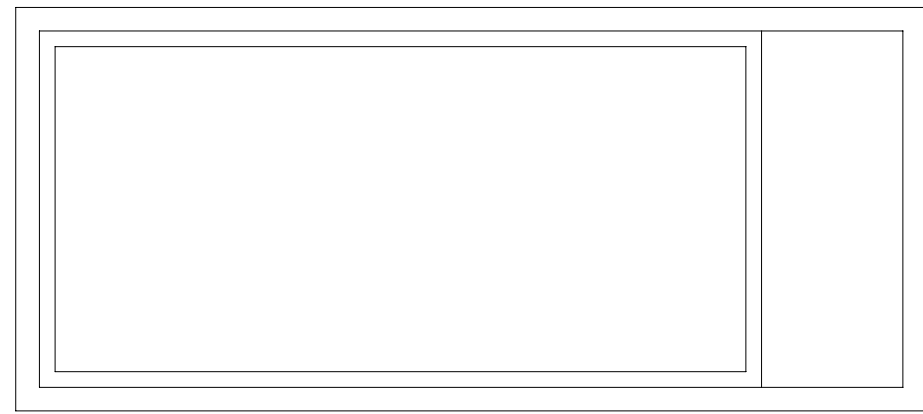
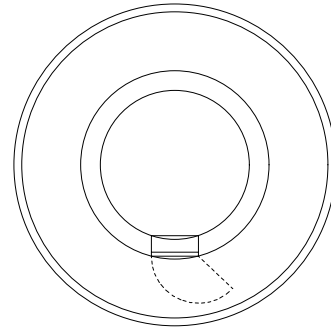
灯台の大きさ

高さ：建物 11.50m 光り 水面から30.10m  
 灯塔の太さ：円錐形 3.30m  
 光りのとどく距離：40万カデラ 16.0海里(約29Km)  
 光りかた：15秒間に白光1回光る(第四等閃光レンズ)  
 設置年月：明治 4年 1月11日

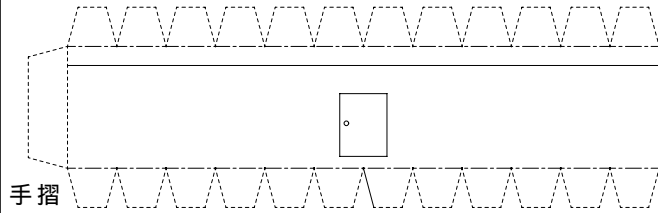




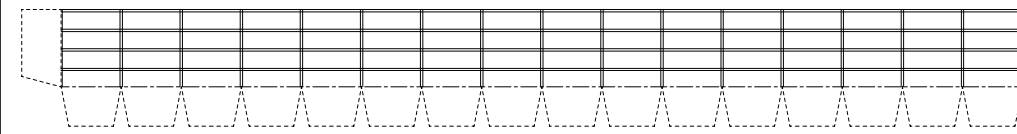
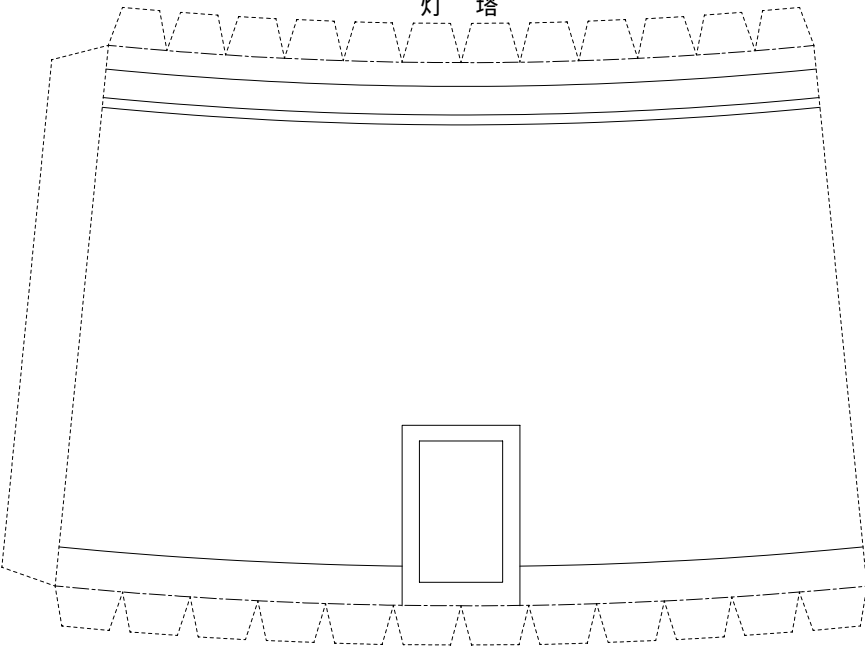
踊り場



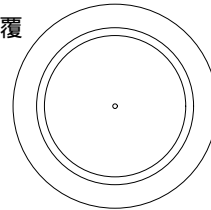
付属舎屋根



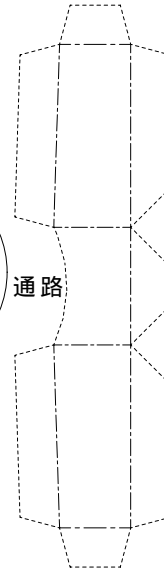
灯塔



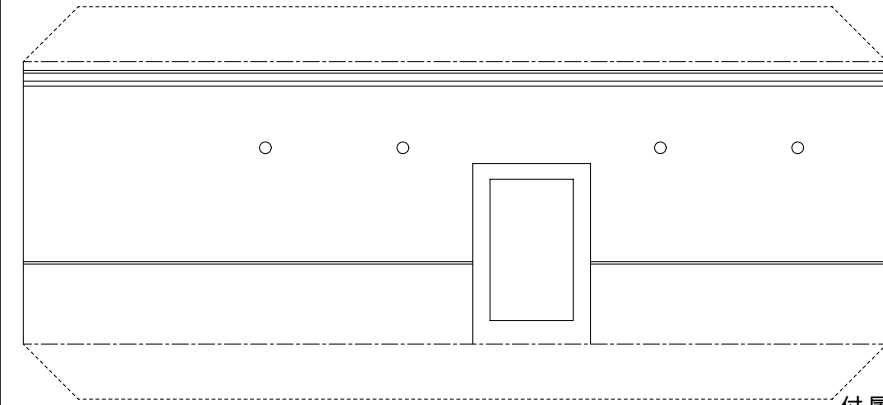
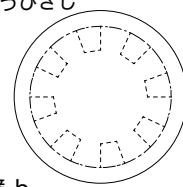
地覆



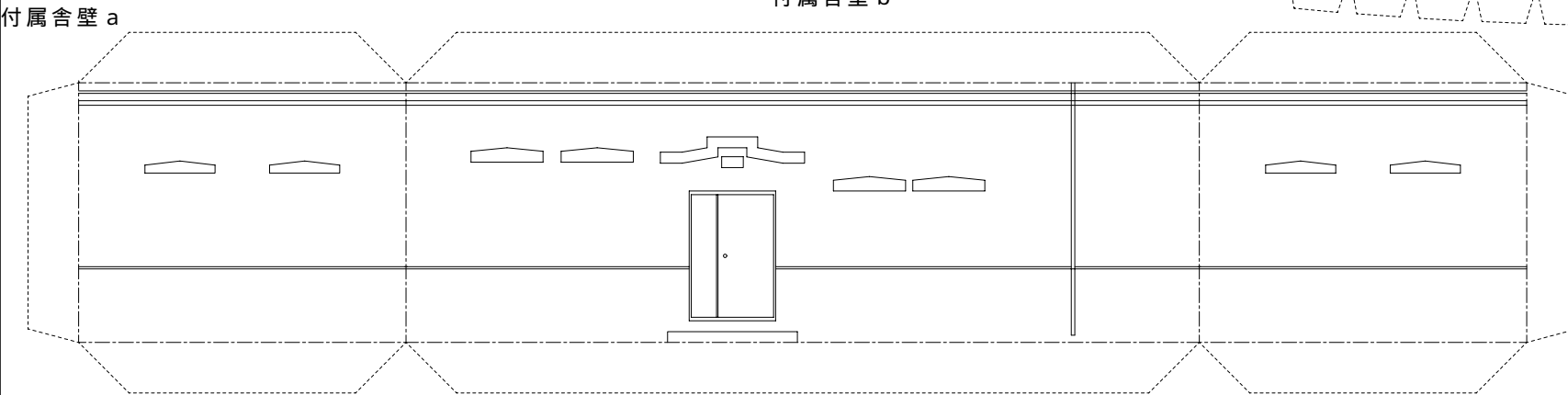
通路



灯ろうひさし



付属舎壁 b



付属舎壁 a