

1 / 200

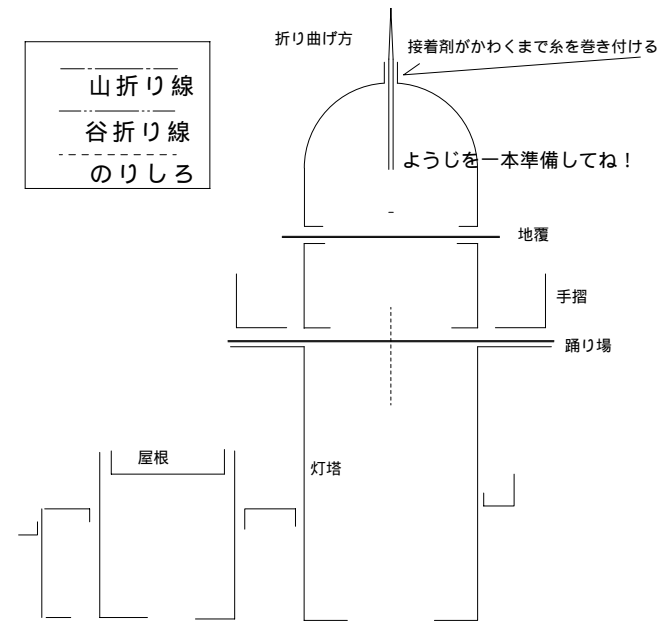
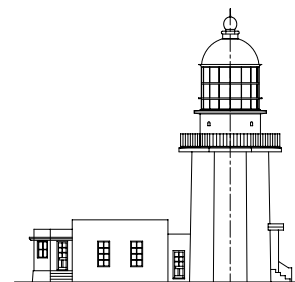


ペーパークラフト NO.82
剣埼灯台 turugi-saki S,1/100

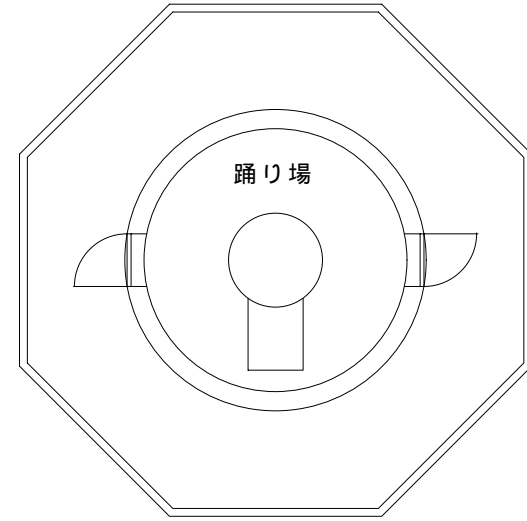
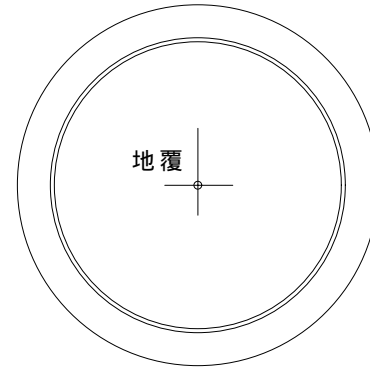
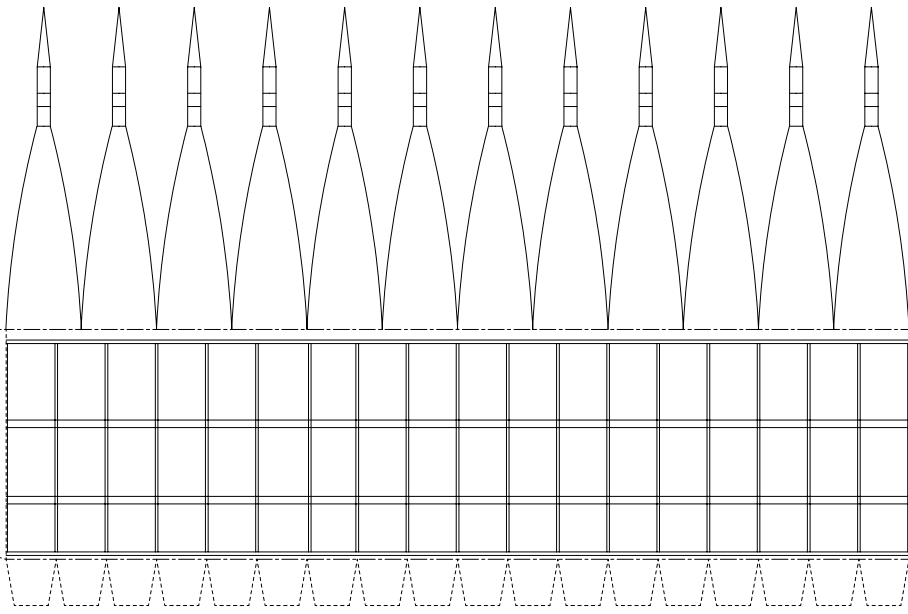
神奈川県三浦市(剣埼)

灯台の大きさ

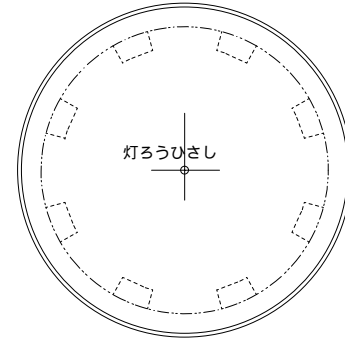
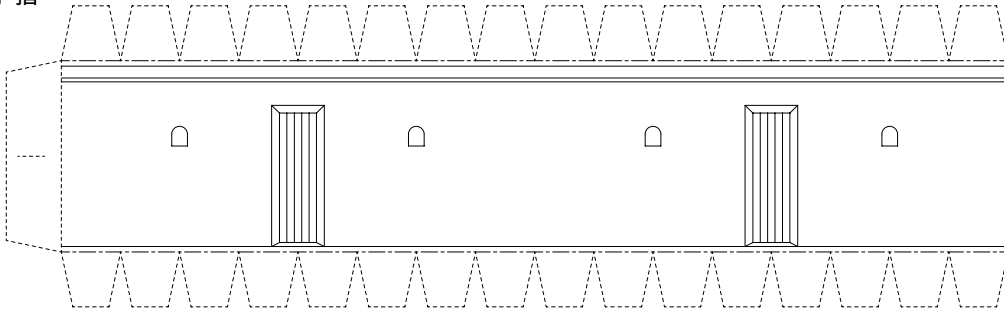
高さ：建物 16.90m 光り 水面から41.13m
 灯塔の太さ：八角形 5.18m
 光りのとどく距離：52万カデラ 18.0海里(約33Km)
 光りかた：30秒間に白光2回緑光1回光る(第二等群閃レンズ)
 設置年月：明治 4年 1月11日



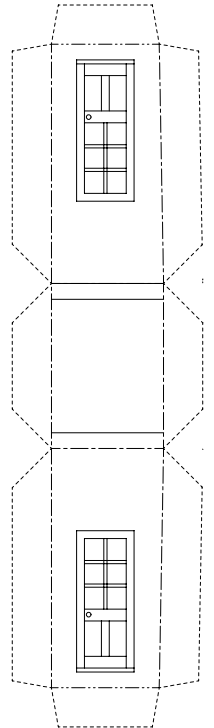
灯ろう



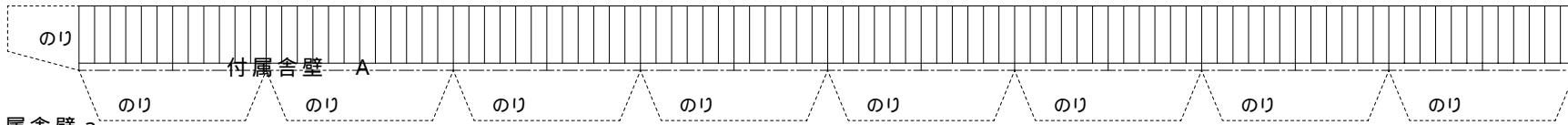
手摺



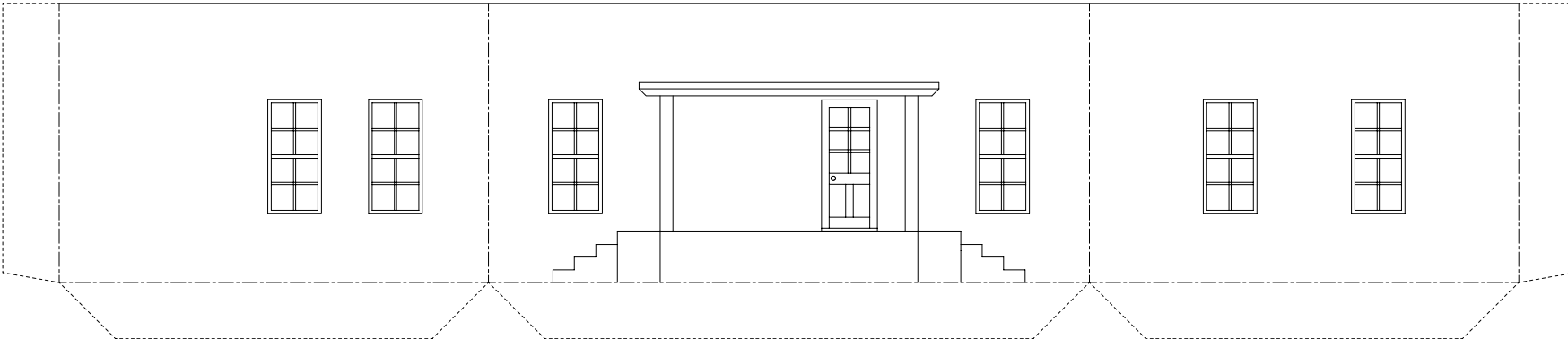
通路



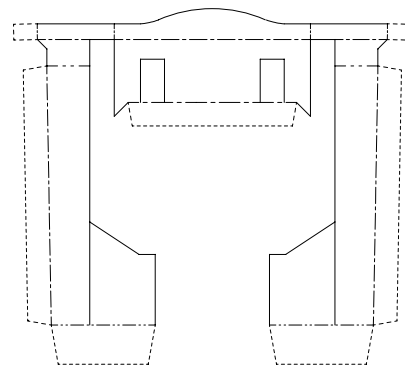
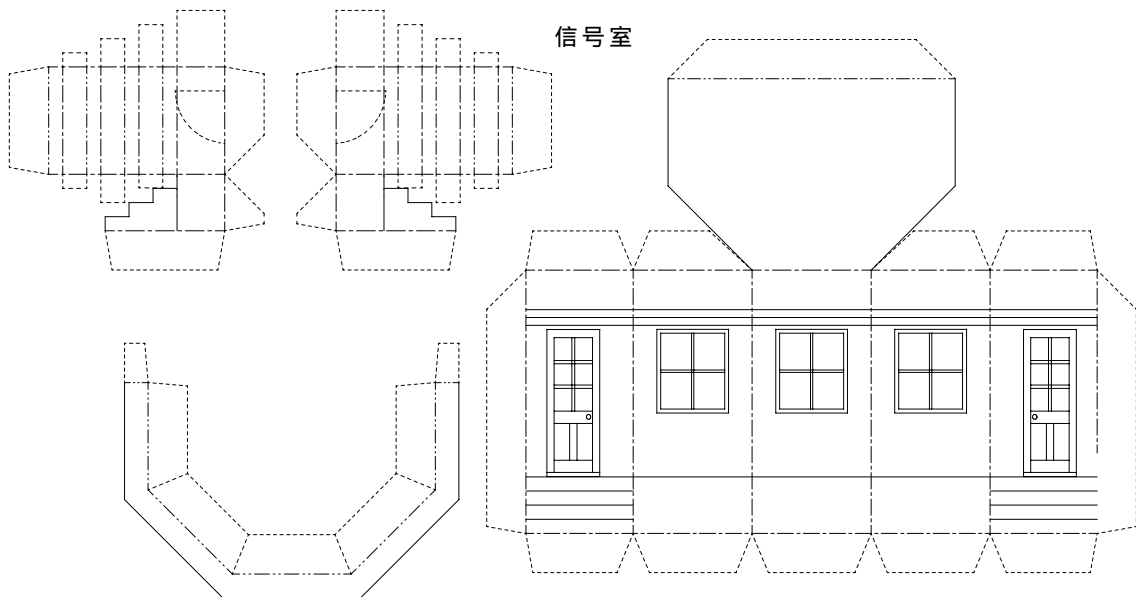
手摺



付属舎壁 a

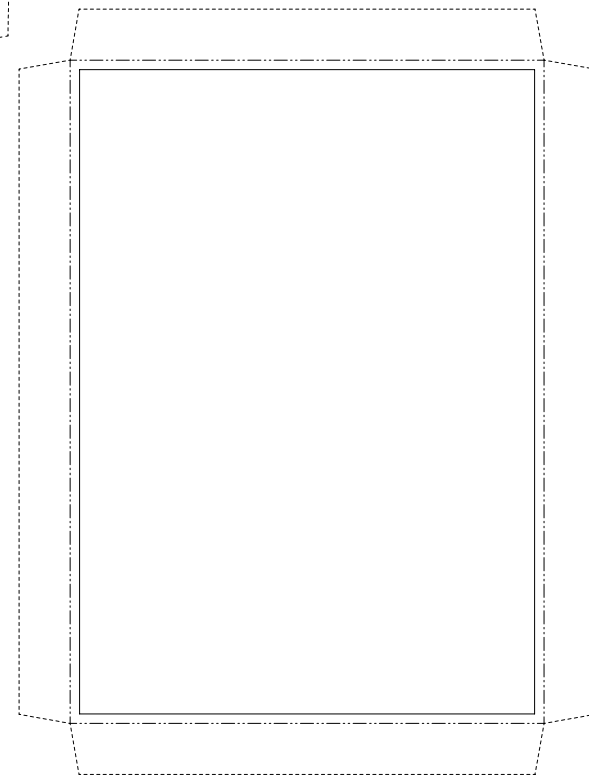


信号室

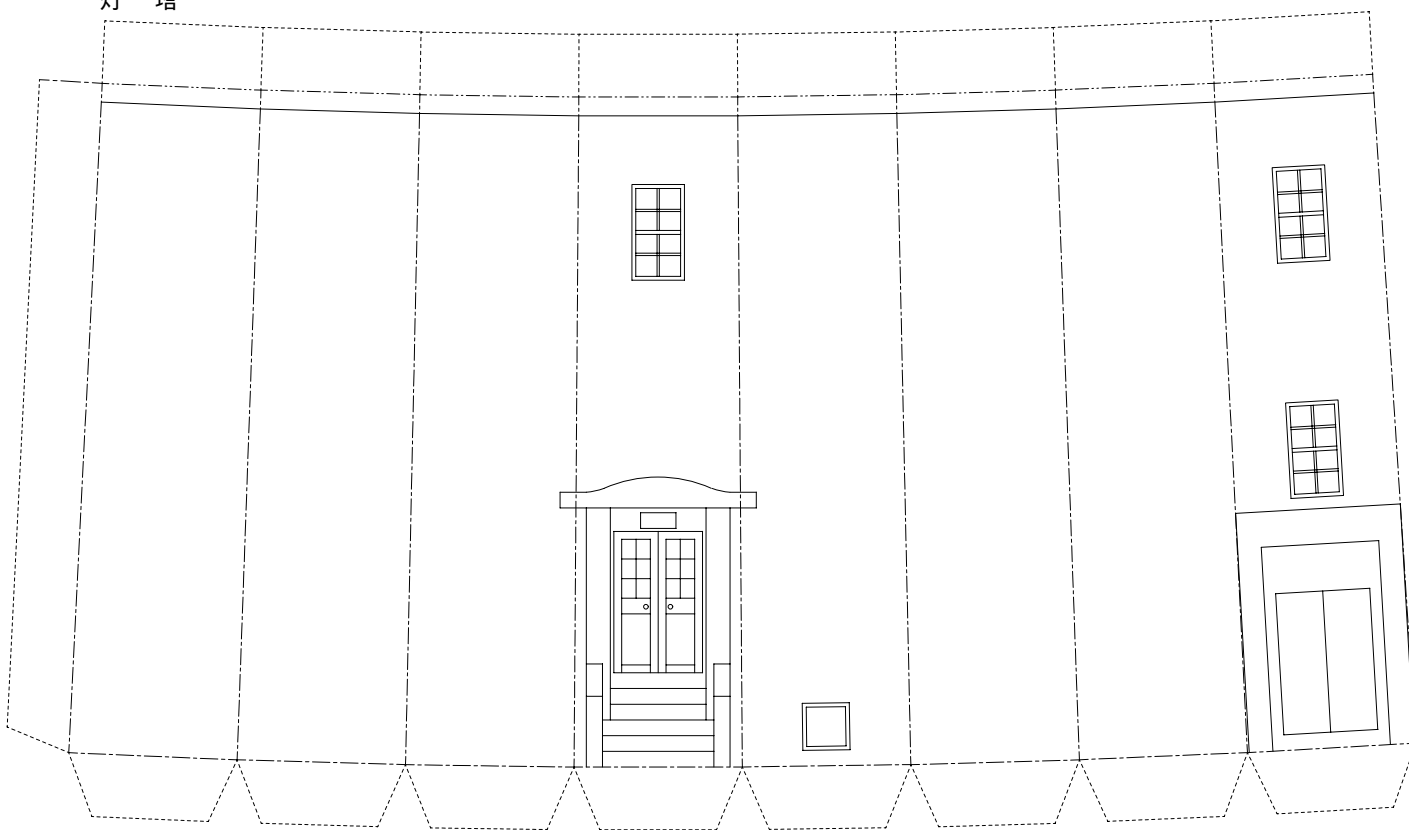


灯塔入口

附属舍屋根



灯 塔



附属舍壁 b

